

Elevate your vision

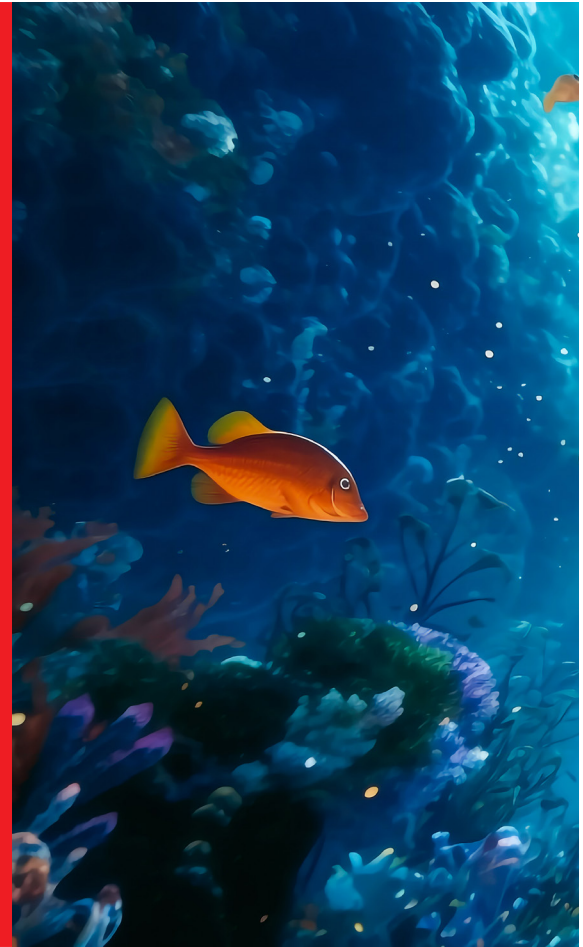
Barco UniSee II



BARCO

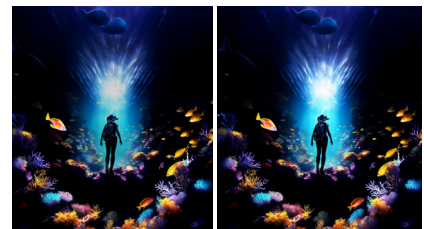
A perfected viewing experience

Barco UniSee® is a truly revolutionary LCD video wall platform, that combines improved image performance, highly perfected installation, and introduces the bezel-less LCD panel. Barco UniSee II is another huge step towards total image perfection. Built on the same proven structure, this new flagship introduces drastically improved visual quality, perfect uniformity and a low TCO. Our LCD video wall platform gets your content on the screen the way it's intended, clearly showing every detail while upholding ergonomic best practices.



Strike with more brightness, colors and contrast

Spectacular image quality is what Barco UniSee stands for. With impressive color accuracy and color depth, your content is shown with deeper blacks, crisper colors and more saturation. The high color contrast has been improved significantly, all without creating any 'halo effects' on bright displays. What's more, the displayed content is analyzed in real-time to maximize the contrast via Barco's proprietary local dimming technology. The peak mode also makes sure you can pump up the brightness for additional impact.



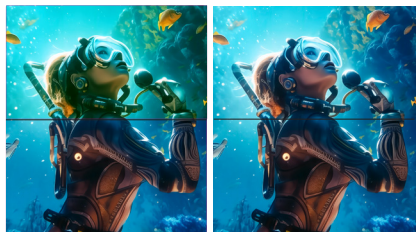
Conventional LCD

Barco UniSee II



Complete display canvas uniformity

An LCD video wall consists of multiple display panels that need to work as one. This means that brightness and color performance must be exactly the same, or the wall will look out of balance. Barco has worked meticulously on image processing and inter-panel communication to deliver optimal image quality. Using sensors that continuously measure color and brightness - and adjust as soon as necessary - the Sense X technology counters any shifts in brightness or color that occur in video walls over time. Introducing additional great innovative features, such as smart local dimming, result in truly superior visual performance.

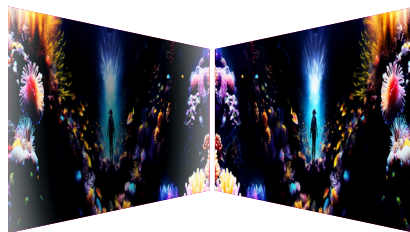


Conventional LCD

Barco UniSee II

Designed to be watched

Video walls are designed to be seen no matter what the lighting conditions are, where you are in the room, or what content is displayed. The high-end polarizer in Barco UniSee II, for example, ensures a crisp performance from very wide viewing angles. What's more, Barco UniSee's eye fatigue reduction measures and reduced radiant heating, provide the comfort control room operators need.



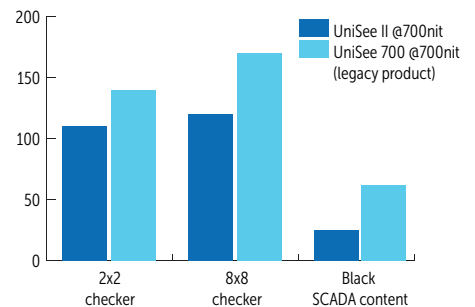
Conventional LCD

Barco UniSee II

Sustainable and cost-effective

Minimizing operational costs while saving the planet. That is what Barco UniSee II's sustainability philosophy stands for. Reducing power consumption by 20% (depending on the content) compared to the previous version, Barco UniSee II effectively shrinks the system's ecological footprint and lowers the total energy bill. High reliability, a modular design that eases serviceability, and optimized precise panel installation with automatic alignment, further contribute to a low operating cost.

Total power consumption @AC mains (W)



The ultimate platform for your application

The lifetime of your video wall does not start with the operational use, but at installation. An imperfect set-up will eventually cause problems, sometimes years after deployment. The revolutionary mounting structure of Barco UniSee ensures a swift and secure installation, without risk of damages. Service goes quickly, without the need to dismantle the neighboring panels. The automatic installation wizard further speeds up the installation process.

Going for an uninterrupted canvas

The rather large gap (bezel) between tiles in conventional LCD video walls makes it difficult to distribute content over multiple tiles. Barco UniSee's virtually seamless NoGap technology ensures the best possible, uninterrupted viewing experience for maximum content engagement - preventing visual information loss.

Self-aligned by the power of gravity

UniSee Mount simplifies the complexity of creating a perfectly aligned wall, keeping the tolerances and the screen gaps under control. Using the power of gravity, the screens slide into perfect position automatically, in any direction along the X, Y and Z axes. In this way, UniSee Mount helps to ensure a sub-mm precise installation, even for very large video walls. Additionally, the UniSee Mount facilitates servicing. Using a simple wrench to move the adjacent screens, all individual panels are easily accessible from the front - even the middle panels. Each panel can be taken out swiftly and securely, making maintenance a lot easier.



Replacing a panel with a simple tool



The modular design ensures upgradability



The art of uptime

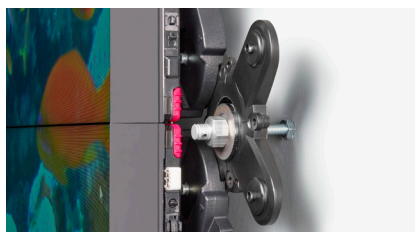
To ensure operability at all times, Barco took all possible measures in the design phase to ensure the system's uptime. This includes using only high-quality components, easy system upgradeability, and (optional) redundancy of critical components. What's more, the system is built in such a way that it can be easily diagnosed and serviced, reducing potential downtime to the absolute minimum.

Protecting the edges

The problem with traditional wall mounts is that they are extremely rigid. This means that there is no flexibility during installation. So you install the screens either with bigger inter-screen gaps, or - when you try to align them perfectly together - you risk damaging the panel edges. UniSee Mount's self-alignment mechanism makes sure the panels align gently, creating the best possible viewing experience, risk-free.

Connected and protected

Barco's cloud-based Video wall Management Suite allows staff and managed service providers to continuously monitor all vital parameters of Barco UniSee video walls from a remote location. The easy user interface helps ensure possible problems are solved quickly and downtime can be prevented.



The Smart Mount cross perfects installation



Removing a panel is swift and easy

Flexibility in any environment

Barco UniSee's flexibility does not confine itself to a single market. With its magnificent images, narrowest screen gap and highest reliability, Barco UniSee matches the visualization needs of many professionals especially in critical environments where it is ideally suited to display compelling content. For example, in mission critical control rooms, impressive corporate lobbies, executive board rooms, high-end meeting rooms, simulation systems and many more. Wherever visualization really matters, Barco UniSee is the best available option.



Control room

In a control room, where fast response and effective decision making is key, the ability to display and share detailed common operational picture information from various sources is of utmost importance. The newest Barco UniSee LCD video wall platform helps control room managers to maximize operational performance by displaying relevant and real-time information, and ensures uptime thanks to its modular set-up. The bezel-less canvas also highly contributes to operator ergonomics, making it easier to watch the screen for a long time.



Corporate lobby

With the Barco UniSee LCD video wall, companies can capture customers' attention to corporate messages from the moment they enter the lobby or the company's experience center with a seamless display of dynamic images or infotainment content. Integrating the newest Barco LCD video wall solution in the corporate lobby creates a welcoming and inviting atmosphere, adds ambiance without being overwhelming and significantly reduces the perceived waiting time for visitors in reception area. Perfect color accuracy makes sure the company branding is presented in the strongest way possible, and the wide viewing angles enable everybody to see the complete canvas.



Executive board room

One of the most important necessities for organizations is an executive boardroom where top management can accommodate visitors and guests, either through in-person meetings or video conferences. Barco UniSee is ideally placed to offer visual assistance by providing a seamless viewing experience supporting the most effective management meetings. The Barco UniSee® LCD video wall delivers the finest image quality and highest reliability, and together with the powerful Barco ClickShare system, it offers the ideal visual solution for the most effective collaboration in boardrooms, high-end meeting rooms and conference rooms.





10 reasons to choose Barco UniSee

- 1.** Uninterrupted viewing experience with NoGap technology
- 2.** Perfectly balanced total image, thanks to automatic and continuous calibration
- 3.** Impeccable image quality with wide color gamut and high contrast levels
- 4.** Superior inter- and intra-tile uniformity
- 5.** Ensured precise installation with automatic alignment, without risk of damage
- 6.** Improved end user ergonomics: wide viewing angles and eye strain reduction
- 7.** Modular, future-proof system that grows with your needs
- 8.** More reliability with redundant power supply, up to 100.000 hours backlight
- 9.** Smoother diagnostics, servicing, and connection with AV controllers
- 10.** Choice between enhanced 800 nit version or 500 nit version

The wider viewing angles of UniSee II mean that more operators can fit the same room and will see identical information.

No colorations, no blurred content and all details are visible for everyone.

Sébastien Gilson,
Senior Project Manager, EQUANS



Tailored to the needs of critical users

Barco has the excellent reputation of being one of the most reliable manufacturers on the market. Not only the quality of the products but also Barco's high level of service have convinced numerous professional users, resulting in very high customer loyalty.

The brand-new Barco UniSee 500+, the successor to the popular Barco UniSee 500, brings many additional advantages to the 500-nit segment. This includes smart local dimming technology and reduced power consumption. Optimized heat radiation and an EMC Class B rating, combined with the UniSee platform's existing eye fatigue reduction measures and wide viewing angles, all make the UniSee 500+ exceptionally well-suited for intensive, round-the-clock operations and contribute to more comfortable control room conditions.

Our commitment to quality is coded into our company DNA and reflected throughout our products. This dedication is further reflected in our certification policies. We can label Barco UniSee II and Barco UniSee 500+ with many of the main technology certifications, including CE, CB, FCC, BIS and TAA.



Specifications	Barco UniSee 500	Barco UniSee 500+	Barco UniSee II
Size screen diagonal	55"	55"	55"
Backlight	Direct LED	Direct LED	Matrix QLED Chip on Glass with > 5700 LEDs
Resolution	Full HD (1920 x 1080)	Full HD (1920 x 1080)	Full HD (1920 x 1080)
Brightness	500 cd/m ²	500 cd/m ²	800 cd/m ² 1300 cd/m ² (Peak mode)
Smart local dimming	No	Yes	Yes
Contrast	1100:1	1200:1	1200:1 Smart dynamic contrast > 200,000:1
Bit depth	3x10 bit	3x10 bit	3x12 bit
Color gamut	Rec 709 [101%] DCI-P3 [74%] NTSE [71%]	Rec 709 [102%] DCI-P3 [75%] NTSE [72%]	Rec 709 [142%] DCI-P3 [106%] NTSE [101%]
HDR processing	No	HDR10 Ready	HDR10 compliant
Power consumption			
350 nit	139W	105W	109W
500 nit	185W	141W	147W
800 nit			218W
EMC Classification	Class A	Class B	Class B (from Q2 2026 onwards)

The very steady image of the total video wall effectively helps to prevent eye fatigue for operators and contributes to better health conditions. When doing a long shift that's really necessary.

Marrieke van Geel,
Senior Human Factors Consultant,
Geel Design



M00000-R02-0326-PB

The information and data given are typical for the equipment described. However any individual item is subject to change without any notice. The latest version of this brochure can be found on www.barco.com.

www.barco.com/unisee-II

