

# TruePix TP0.9-I

0.9 mm pixel pitch, high-res indoor LED display



- **Smart engineering guarantees truly seamless outcomes**
- **High brightness, less energy consumption**
- **Smooth and efficient operations, 24/7**
- **Superb color accuracy and contrast, under all lighting conditions**
- **Reduced ecological footprint**
- **TÜV Eye Comfort certification**
- **Up to 10 years of dedicated service and support**

TruePix TP0.9-I is Barco's new flagship indoor high-resolution LED platform. The 27.5" inch tiles, with a 16:9 aspect ratio, have a pixel pitch of only 0.9 mm. TruePix is designed for control room, corporate and broadcast visualization applications and supports both environments exposed to ambient light and controlled lighting environments.

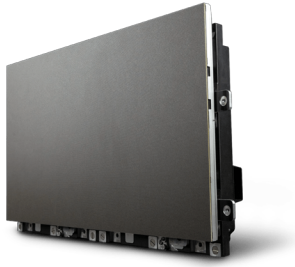
TP0.9-I is designed to be even more reliable, optimize the viewing comfort and reduce power consumption. With its 5 star rating TÜV Eye Comfort certification, a program under which products are evaluated on eye wellness, TruePix TP0.9-I can truly be used in 24/7 critical applications.

### High brightness, low power consumption

The TP0.9-I benefits from the flip chip, 'common cathode' and IMD (4-in-1 pixel package) technology, making it more robust, energy efficient and further improves the black levels to reach a spectacular contrast. Another benefit is a higher brightness of more than 1800 nit (and in peak brightness over 2300 nit) which further enhances the contrast and detail of the displayed content. Power consumption is a lot lower than conventional solutions, doubling the energy efficiency.

### Truly seamless outcomes

TruePix brings content to life as intended and ensures predictable, truly seamless outcomes, by combining smart engineering and Infinipix™ Gen2, the next generation of Infinipix™. Smooth and efficient operations are guaranteed 24/7, next to full peace of mind.



Barco TruePix' smart engineering introduces a unique mechanical concept for risk-free and precise installations, eliminating visual distortion. This unmatched seamlessness and flatness are achieved through guided module placement and self-leveling mounts. The next generation of Barco's proprietary Infinipix™ Gen2 guarantees full image integrity at any brightness level, together with superb color accuracy. It flexibly and automatically supports any content need while reducing eye fatigue.

### **Peace of mind at any time**

Smooth and efficient operations are guaranteed 24/7 through uninterrupted data flows. Users can reduce the carbon footprint by using the EcoPower standby mode. Up to 10 years of dedicated service and support (ensuring a uniform viewing experience) to allow for peace of mind during the entire product lifetime.

**Product specifications****TRUEPIX TP0.9-I**

<b>LED tiles</b>	
Pixel pitch	0.953
Technology	Flip chip
Pixel per module	640x360 (HxV)
Aspect ratio	16:9
Dimensions	(WxHxD) 609.92x343.08x94mm / 24.01"x13.5x3.70"
Weight	Standard / curved tiles: 8.3kg/tile (single PSU) / 8.7kg/tile (dual PSU) Modular curved tiles: 9.1kg/tile (single PSU) / 9.5kg/tile (dual PSU)
LED lifetime	100.000h (video -50% brightness)
Brightness	>1800 nit
Peak brightness	>2300 nit
Internal processing	23 bit
Color depth	16 bit (281 trillion colors)
Shaders	No
Control	Infinipix™ Gen2
Refresh rate @60Hz	7.680 Hz
3D	3D Supported
Frame rate	24 -144 Hz
Hor. viewing angle	160° +/-5°
Vert. viewing angle	160° +/-5°
Brightness uniformity	>98%
Dimming	0-100%
Power consumption	488 W/m <sup>2</sup> (max) 102 W/Tile -Standard mode 699 W/m <sup>2</sup> (max) 146 W/Tile -High mode 267 W/m <sup>2</sup> 56W/Tile (typ)
Heat dissipation	1665 BTU/h/m <sup>2</sup> (max) -Standard mode 2384 BTU/h/m <sup>2</sup> (max) -High mode 911 BTU/h/m <sup>2</sup> (typ)
Ceiling configurations supported?	Yes
Heat dissipation front/back	54%/46%
Operation power voltage	AC power: 100-240V 50/60Hz DC power: Input: 36-55Vdc 16A (max.) Output: 36-55Vdc 10.72A/36V (max.) or 12.55A/55V (max.)
Operational humidity	10 -80%
Operational temperature	-10°C to +40°C / 14°F to 104°F
Storage temperature	-20°C to +60°C / -4°F to 140°F
Storage humidity	10 -80%
Redundancy	Power: Optional Data: Standard inter-tile redundancy Embedded signal loop redundancy Optional N + N redundancy
HDR	HLG / HDR10 supported
Concave curvature	Up to 5° standard curved tile (7m radius) Up to 5° curved modular tile (3,5m radius)
Convex curvature	Up to 3° standard curved tile (12m radius)
Serviceability	Full front & full back service Modular curved tile: Full front & full back service (PSU only back access)
Cable management	No external cabling
Installation	Self-leveling with surface tolerance compensation
Module replacement	Automated parallel motorized extraction
Module placement	Guided module placement
Ergonomics	SteadyView™ driver algorithm to reduce eye fatigue
Certifications	CE, UL, FCC class A, RoHS, WEEE, REACH, CCC, RCM TÜV Rheinland certification for eye comfort
Warranty	3 years
EssentialCare Service offering	10 years with LED batch compatible modules

**Last updated: 21 May 2026**

© 2026 Barco nv. All rights reserved. Reproduction in whole or in part without written permission is prohibited. All brand names and product names are trademarks, registered trademarks or tradenames of their respective holders. Due to continued innovation, information and technical specifications are subject to change without prior notice. Please check [www.barco.com](http://www.barco.com) for the latest specifications.