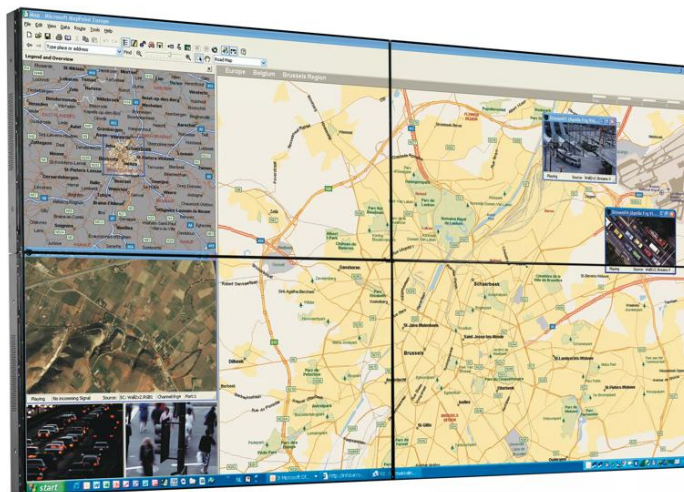
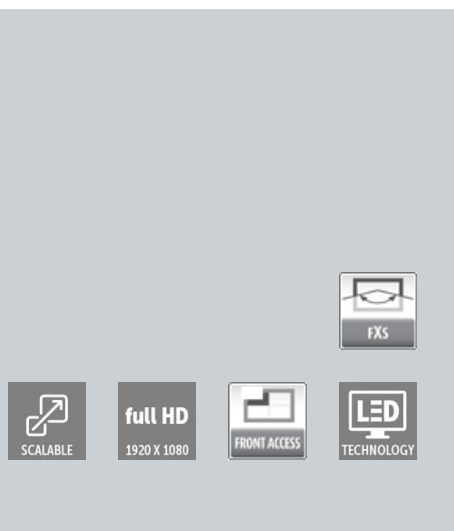


# OverView NSL-4621

46" near-seamless LCD video wall



The OverView NSL-4621 46" tiled LCD video wall uses durable LED backlights positioned directly behind the LCD panel and has a super narrow bezel, resulting in excellent tiled visual performance. This video wall series was designed for 24/7 use in control rooms. Its deep dark levels are perfect for visualizing data-driven information, including process control schematics. The OverView NSL-4621's exceptionally high brightness levels allow these video walls to be used in any lighting condition.

## Durable and bright

These tiled LCD video walls offer the best image quality around in terms of resolution, brightness and viewing angle. Because LED backlights reduce burn-in and colorations in the LCD filters and polarizers, the OverView NSL-4621 has a long panel life.

Ideal for:

- Emergency Operations Centers
- Traffic management and surveillance centers
- C4I-SR environments
- Utilities and process control centers
- Broadcast & telecom monitoring
- Space-saving display wall solution
- Lower heat output than traditional lamp-based systems

- Long panel life as LED backlights reduce burn-in and colorations
- Stable colors across the entire video wall
- Exceptionally narrow bezel resulting in very small seams
- High brightness, excellent contrast and a wide viewing angle
- Easy to install, service and maintain thanks to front access
- Eco-friendly and durable solution as LEDs contain no mercury and are energy-efficient

Tiled LCD technology -the right choice for your control room:

- Unlike front projection, tiled LCDs require less maintenance costs, have a better contrast ratio and are not influenced by ambient light.
- Unlike plasma technology, tiled LCDs require less power consumption and are not subject to permanent, irreversible burn-in.
- Unlike normal-bezel LCD displays, tiled LCDs offer more scalability, minimize bezel distraction and allow optimal usability of the screen surface with high resolution.
- Unlike lamp-based LCD displays, tiled LCDs with LED backlights offer more brightness, optimal image quality and a high life expectancy.

## Product specifications

## OVERVIEW NSL-4621

### General specifications

LCD technology	S-PVA, normally black, DID technology for extensive usage, AIR Anti Image Retention circuitry
Resolution	Full HD (1920 x 1080)
Backlight	Direct LED
Aspect ratio	16:9
Pixel density	48 dpi
Refresh rate	60 Hz
Luminance	700 cd/m <sup>2</sup> (typ)
Contrast	3500:1 (typ.)
Viewing angle	H 178° V 178°
White point	10,000 K
Color	10 bits -1.07 B colors
Precision	Internal 10 bit processing for precise color calibration
Backlight lifetime	60,000 h (typ)
MTBF	100,000 h (half brightness)
Active screen diagonal	46" (1168 mm)
Dimensions	1024.0 x 578.6 x 98.2 mm   40.3" x 22.8" x 3.9"
Active screen area	1018.1 mm x 572.7 mm   40.1" x 22.6"
Bezel width generation	Right, bottom: 1.9 mm   0.075" Left, top: 3.8 mm   0.15" Total: 5.7 mm   0.22"
Weight	26 kg   57.3 lbs (net) 36 kg   79.4 lbs (gross)
Cooling	Low noise fans
AC input voltage	100-240 VAC, 60-50 Hz
Power consumption	190 W (max)   90 W (typ)   20 W (sleep)   2.5 W (stdby)
Heat dissipation	819 BTU/h (max)
VGA	Separate sync DSUB-15P in/out
DVI	Single link DVI-D in/out with HDCP
DisplayPort	Display port input (Out via DVI)
HDMI	HDMI Type A with HDCP (Out via DVI)
CVBS	BNC in/out
S-video	Mini-DIN S-terminal in/out
Barco Wall Control Manager	Server connected via RS232 chain Remote client application: on/off, wall setup, source selection, status, brightness, contrast and color adjustments
Component video	3xBNC in/out
Control signal	RS-232 DSUB9 PIN in/out
Operating humidity	20-80% non-condensing
Operational temperature	0-40°C   32-104°F
Storage humidity	10-90% non-condensing
Storage temperature	-20-60°C   -4-140°F
EMI / EMC	EMC / IEC / FCC / CE / KCC
Safety	UL / c_UL / CB / TUV / KCC

Last updated: 08 Jul 2024

© 2024 Barco nv. All rights reserved. Reproduction in whole or in part without written permission is prohibited. All brand names and product names are trademarks, registered trademarks or tradenames of their respective holders. Due to continued innovation, information and technical specifications are subject to change without prior notice. Please check [www.barco.com](http://www.barco.com) for the latest specifications.