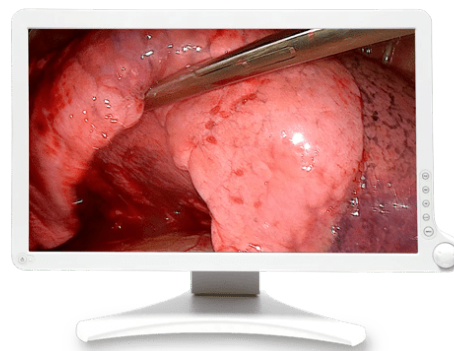


AMM 215WTD

Full HD 21.5-inch surgical display

21" SCREEN
full HD
1920 X 1080P
10 BIT
LED BACKLIGHT

IP23
178°
VIEWING ANGLE



- **Compact size for routine screening procedures in GI Endoscopy or Colonoscopy**
- **High-quality, cost-effective**
- **Antimicrobial Seolforbio Technology™**

Major quality in a compact size

With its compact 21.5" size and high pixel density, the AMM 215WTD is the perfect match for endoscopy cameras. Featuring true 10-bit real-time processing, motion adaptive SD and HD de-interlacing, advanced 3D noise reduction, and accurate chromatic data reproduction, this surgical display meets the highest image quality standards.

All-round connectivity

The AMM 215WTD supports a broad range of input types including VGA, DVI, Composite & S-Video, RGB, Component, HD/SD SDI.

Safety guaranteed

The 21.5" surgical display comes with proprietary Antimicrobial Seolforbio Technology™ to prevent bacterial cultivation and odor on the LCD display. This plastic injection technology makes the AMM 215WTD compliant with the ISO22196 standard for antimicrobial activity of antibacterial treated plastics.

- Superb quality high resolution LCD
- Energy-efficient LED backlight
- Wide range of inputs supported
- Sealed design to meet IP23
- Antimicrobial Seolforbio Technology™
- Arm mountable VESA compliance
- Picture-by-Picture mode with independent adjustment
- Protective filter
- DC powered
- Intuitive rotary control

Product specifications**AMM 215WTD**

General specifications	
Screen technology	TFT AM LCD / LED Backlight
Active screen size (diagonal)	21.46" inches (545.2 mm)
Active screen size (H x V)	475 x 267 mm (18.7 x 10.5")
Aspect ratio	16:9
Resolution	1920 x 1080
Pixel pitch	0.2475 mm
Color imaging	Yes
Color support	16.7 million
Viewing angle	178°
Luminance	250 cd/m2
Contrast ratio	1000:1
LCD transition time	
Screen protection	Double-side anti-reflective PMMA protective cover
Video input signals	2xDVI-I, VGA, RGBS / YPbPr, S-video, Composite video, 3G-SDI
Video output signals	SDI / S-video /Composite Video, RGBS / YPbPr
Remote control	9-pin D-Sub (RS-232C) x 1
Power requirements (nominal)	Power adaptor: AC 100 ~ 240V 50-60Hz, 2.0A DC 13V, 6.92A
Power consumption (nominal)	50W
Dimensions packaged (W x H x D)	662 x 630 x 232 mm
Net weight display	Monitor: 5.46Kg (approximately) AC adaptor: 720g
Mounting standard	VESA (100 x 100 mm)
Certifications	FDA & EC: Endoscopic and Surgical imaging (Class I) Safety: UL (UL60601-1), cUL (CAN/CSA-C22.2 No.6011-M90), CE (EN60601-1), AS/NZS 3200-1-0. CCC (GB4943-2001), CB-ITE (IEC60950-1), IP23 Compliance EMC: FCC (Part Class B), CE (EN60601-1-2), AS/NZS 3200-1-2, VCCI (Class B), CCC (GB9254, GB17625.1)
Operating temperature	32° ~ 95°F (0°~ 35°C)
Storage temperature	-4° ~ 140°F (-20° ~ 60°C)
Operating humidity	20% ~ 80%, non-condensing
Storage humidity	10% ~ 85%, non-condensing

Last updated: 09 May 2024

© 2018 Barco nv. All rights reserved. Reproduction in whole or in part without written permission is prohibited. All brand names and product names are trademarks, registered trademarks or tradenames of their respective holders. Due to continued innovation, information and technical specifications are subject to change without prior notice. Please check www.barco.com for the latest specifications.