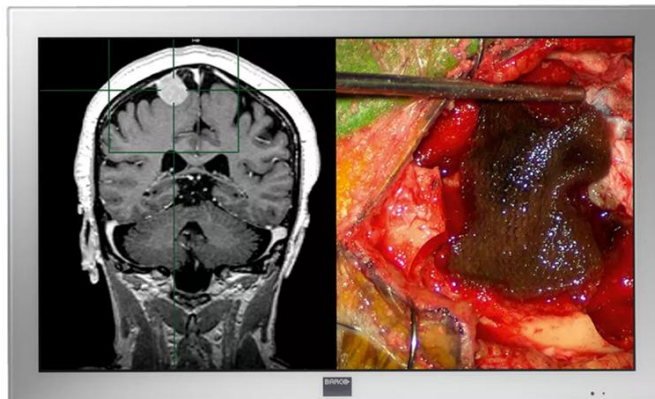


# MD-4221

42-inch High Definition LCD display for the operating room



## Bringing PACS to the OR

Fitted with a 10-bit high-contrast LCD panel and a built-in DICOM Look-Up Table, the MD-4221 is optimal for consulting PACS images in the OR.

## User-definable screen layout

The MD-4221 lets you combine two images -in any mix of data and video -next to each other or as Picture-In-Picture. Its wide viewing angle of 178° ensures that all this information is clearly visible for everyone in the surgery suite.

## Designed for the operating suite

An anti-reflective protective front glass allows the monitor to be cleaned and disinfected (IPX1 compliant), while its fan-less design avoids the spread of contaminants in the operating room.

**Product specifications****MD-4221****General specifications**

Screen technology	TFT LCD
Active screen size (diagonal)	1067 mm (42.0")
Active screen size (H x V)	930 x 523 mm (36.6 x 20.6")
Aspect ratio (H:V)	16:9
Resolution	2MP (1920 x 1080)
Pixel pitch	0.4850 mm
Color imaging	Yes
Color support	> 1 billion
Viewing angle (H, V)	178°
Maximum luminance	500 cd/m <sup>2</sup>
Contrast ratio	1300:1
Response time (Tr + Tf)	10 ms
Scanning frequency (H; V)	30-93 KHz, 50-85 Hz
Housing color	White
Video input signals	DVI-D Single Link VGA (D15) S-video Composite video Component video RGBHV SDI/HD-SDI input/output
Interfaces/Ports	Component video Composite Video S-video D15 DVI-I RS232 No audio RS232, IR remote control
Power requirements (nominal)	100-250V
Power consumption (nominal)	260W
Power save mode	Yes
Power management	DVI-DPMP states supported Power On state Active-Off state DPMS states supported
Dot clock	162 MHz
OSD languages	English
Dimensions w/o stand (W x H x D)	1024 x 617 x 111 mm
Dimensions packaged (W x H x D)	1185 x 790 x 355 mm
Net weight w/o stand	30.4 kg
Net weight packaged w/o stand	35.0 kg
Mounting standard	VESA (MIS F; 600; 200 -8)
Screen protection	Protective, non-reflective glass cover
Recommended modalities	CT, MR, US, DR, CR, NM, Film
Certifications	UL 60601-1, CAN/CSA-C22.2 No 601.1-M90: 2005, EN 60601-1, IEC 60601-1, CE, EN 60601-1-2, FCC-B, VCCI, RoHs compliant, KCC, IPX1
Supplied accessories	User manual Video cables (DVI-D, VGA) Main cables (European (CEBEC/KEMA), USA (UL/CSA)) Remote control
Optional accessories	Barco MDSC Surgical Medical LCD Display Extension Cable 10m Barco MDSC Surgical Medical LCD Display Extension Cable 2.5m Barco MD-4421 Surgical Medical LCD Display Wall Bracket
Warranty	3 years

**Last updated: 08 Jul 2024**

© 2024 Barco nv. All rights reserved. Reproduction in whole or in part without written permission is prohibited. All brand names and product names are trademarks, registered trademarks or tradenames of their respective holders. Due to continued innovation, information and technical specifications are subject to change without prior notice. Please check [www.barco.com](http://www.barco.com) for the latest specifications.