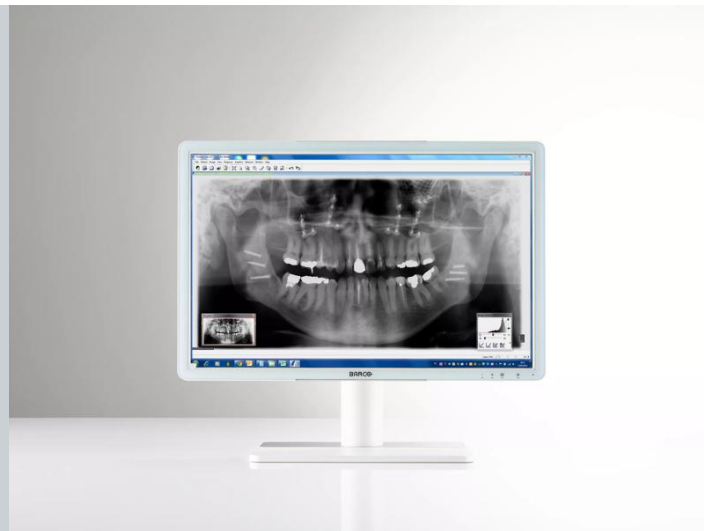
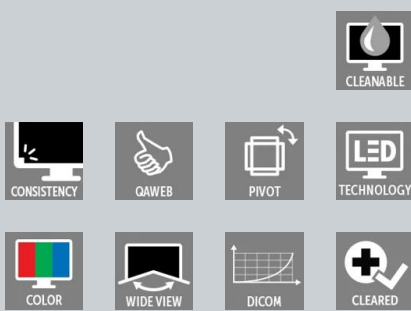


Eonis 24" (MDRC-2224 WP) Dental

White 24" dental display with cleanable design



- 24" display for reviewing dental images
- With front sensor for consistent images
- With remote QA management tools
- Fully sealed, fully cleanable

Barco's Eonis® dental display perfectly answers a series of needs that many dentists will recognize: an attractive, versatile design, excellent cleanability and bright, consistent image quality. The white version features a front glass panel and is fully sealed, making it exceptionally cleanable, even with 70% alcohol cleaning agents.

Fully cleanable design

Barco's Eonis display features toughened glass and covered cables, making the display safe to use in a dental environment. The display has a protective front glass panel and is rated IP-32 front and back, making it exceptionally cleanable to prevent contamination.

Attractive, versatile and multi-purpose

Stylishly white with rounded corners and an integrated cable management system, the display will perfectly blend into every dental practice. The multiple mounting options further add to its smart design: it can be used with a VESA stand, on the dentist's desk, or mounted on a rotatable arm. Multiple connections are available, including extra inputs to show video content.

Consistent image quality

Eonis displays provide crisp, high-contrast images for fast and effective viewing of dental images. To guarantee image consistency at all times, the display features a unique front sensor that automatically aligns image quality every time the display is turned on. Barco's online MediCal QAWeb service further strengthens image consistency and allows you to easily personalize your image.

- Front consistency sensor automatically aligns image quality

- IPS panel ensures wide viewing angle
- MediCal QAWeb suite for networked quality assurance, calibration and asset management all add to the exceptional, consistent image quality
- Exceptional cleanability with 70% alcohol based cleaning fluids (white version)
- Toughened, scratch-proof front glass
- Covered cables
- Medical-grade certifications
- Socket for Kensington lock makes it safe for use in clinical environments
- Flexible VESA mount for easy arm, wall or cart mounting
- Screen positioning in both landscape and portrait orientation
- Top connections for easy and secure connections
- Multiple inputs (HDMI, USB, etc.) ensure the display's flexible deployment.

Product specifications**EONIS 24" (MDRC-2224 WP) DENTAL**

General specifications	
Screen technology	TFT Color LCD IPS
Active screen size (diagonal)	611.3 mm (24.1") 518.4 mm x 324.0 mm (20.41" x 12.76") (HxV)
Backlight	LED
Aspect ratio	16:10
Resolution	2MP (1920 x 1200)
Pixel pitch	0.270 mm x 0.270 mm
Color imaging	Yes
Gray imaging	Yes
Color support	10 bit
Viewing angle	178° (IPS)
Ambient Light Compensation (ALC)	Yes, preset values in OSD
Front sensor	Yes
Maximum luminance	300 cd/m ² typical
DICOM calibrated luminance	180 cd/m ²
Contrast ratio	1000:1 typical
Response time (Tr + Tf)	14 ms typical
Housing color	White + Silver
Video input signals	VGA, DisplayPort, HDMI
USB ports	1 upstream, 2 downstream
USB standard	2.0
Power requirements (nominal)	100-240 V
Power consumption (nominal)	40 W (less than 1.0 W in stand-by)
Power save mode	Yes
Power management	DPMS
Dot clock	165 MHz
OSD languages	English, French, German, Spanish, Italian, Dutch, Japanese, Traditional Chinese, Simplified Chinese, Korean
Dimensions with stand (W x H x D)	560.4 x 533 x 166.35 mm
Dimensions w/o stand (W x H x D)	560.4 x 366 x 61.72 mm
Dimensions packaged (W x H x D)	481 x 273 x 761 mm
Net weight with stand	9.5 kg
Net weight w/o stand	6.17 kg
Net weight packaged with stand	13.5 kg
Height adjustment range	100 mm +/-5.0 mm
Tilt	-5° / +20°
Swivel	-45° / +45°
Pivot	90°
Mounting standard	VESA (100 mm)
Screen protection	Protective, non-reflective glass cover

Product specifications**EONIS 24" (MDRC-2224 WP) DENTAL**

Certifications	CE (MDD 93/42/EEC class I product), CE -2004/108/EC, IEC 60601-1 (ED:3), ANSI/AAMI ES 60601-1:2005 + C1:2009,CAN/CSAC22.2 No. 60601-1-1-08:2008, DEMKO -EN 60601-1-1:2006, EN 60601-1-2:2007, CCC -GB9254-2008 + GB4943-2001 + GB17625.1-2003, KC, BIS, VCCI, FCC class B, ICES-001 Level B, FDA Class I device, RoHS
Supplied accessories	User Guide Cable routing strap Video cables (1 x VGA + 1 x HDMI + 1 x DP) Main cables (UK, European (CEBEC/KEMA) or USA (UL/ CSA; adaptor plug NEMA 5-15P) or Chinese (CCC)) USB 2.0 cable This adapter(s) is a forming part of the medical device.(Manufacturer: BridgePower Corp.; model:BPM060S12F03; Input:100-240 V AC, 50-60 Hz, 1.5 A; Output: +12V DC (), 5.0 A)
QA software	QAWeb & QAWeb Private Practice
Warranty	3 years
Operating temperature	+10°C / +35°C
Storage -transport temperature	-20°C / +60°C
Operating humidity	10% -90% (non condensing)
Storage -transport humidity	5% -90% (non-condensing) at 39 deg ambient
Operating altitude	3000m
Storage -transport altitude	5500m
Operating pressure	70 kPa -106 kPa
Storage -transport pressure	50 kPa -106 kPa

Last updated: 16 Mar 2023

© 2018 Barco nv. All rights reserved. Reproduction in whole or in part without written permission is prohibited. All brand names and product names are trademarks, registered trademarks or tradenames of their respective holders. Due to continued innovation, information and technical specifications are subject to change without prior notice. Please check www.barco.com for the latest specifications.