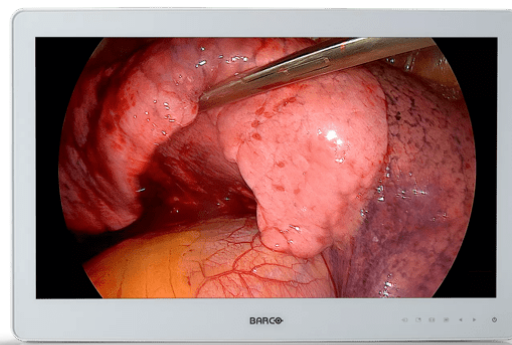
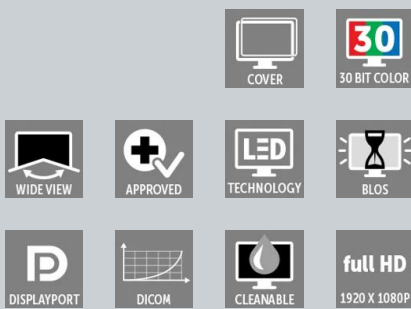


MDSC-2326

Full HD surgical display



- For the best hand-eye coordination
- Allows for easy cleaning and disinfection
- Works with Nexxis for video-over-IP integration

Barco's MDSC-2326 is a 26-inch, near-patient surgical display with LED backlight. Next to the renowned image quality of the MDSC-2226, the new scratch-resistant, high quality optical glass offers durable protection throughout the display's lifetime.

Ease of mind

Calibrated, artifact-free images

The display's stabilized brightness, high contrast and calibrated colors provide surgeons with excellent depth perception and the most accurate images from FHD endoscopy camera systems.

Multi-source, multi-display imaging

With its broad input connectivity, the MDSC-2326 offers flexible multi-modality imaging (PiP & PaP) in new integrated operating rooms. Featuring an integrated Barco Nexxis decoder (optional) it offers the most convenient visualization solution for uncompressed video-over-IP without delay.

Safety, stability and redundancy

Thanks to its LED backlight with light output stabilization, the display ensures lifetime-long performances and image consistency. It also offers a unique, automated failover feature so a backup signal is always available to ensure safe surgery

Ease of installation

The MDSC-2326 comes with a smart cable management system that hides the cables for a clutter-free set-up. Its lightweight design allows easy mounting on surgical booms and spring arms.

Ease of use

Barco's MDSC-2326 allows for easy cleaning and disinfection thanks to its smooth

surface, splash-proof housing (front protection level IP45). It comes with a highly durable, scratch-resistant front glass featuring excellent optical performance.

Barco's MDSC-2326 features:

- 26" wide-screen LCD
- Full HD resolution (1,920 x 1,080)
- High-bright LED backlight with output stabilization
- Wide viewing angle thanks to IPS-Pro LCD technology
- 10-bit image processing
- Artifact-free images
- Calibrated, consistent colors and grayscales
- Easy-clean design with sealed front (IPX5)
- Smart cable management system

Product specifications**MDSC-2326**

General specifications	
Screen technology	TFT AM LCD
Active screen size (diagonal)	661 mm (26.0")
Active screen size (H x V)	576 x 324 mm (22.7" x 12.8")
Aspect ratio	16:9
Resolution	2MP (1920 x 1080)
Pixel pitch	0.300 mm
Color support	1073 million (10-bit)
Viewing angle	178° (panel typical)
Maximum luminance	500 cd/m ² (panel typical) 400 cd/m ² *stabilized @6500K & ITU-709
Contrast ratio	1400:1 (panel typical)
Response time (Tr + Tf)	18 ms (typical)
Housing color	White RAL 9003
Video inputs	<p>MDSC-2326 LED DVI-I (Digital & Analog – HDMI support) 3G-SDI(1x BNC) DisplayPort 1.1a Component Video RGBS / YPbPr (4xBNC) S-video (4-pin Mini DIN) Composite video / SOG (1xBNC)</p> <p>MDSC-2326 DDI DVI-I (Digital & Analog – HDMI support) DVI-D 2x 3G-SDI(2x BNC) DisplayPort 1.1a Component Video RGBS / YPbPr (4xBNC) S-video (4-pin Mini DIN) Composite video / SOG (1xBNC)</p> <p>MDSC-2326 MNA Same as MDSC-2326 LED + 1x Fiber Optic SFP+ (for uncompressed video over IP)</p>
Video outputs	<p>DVI-D S-video (4-pin Mini DIN) Composite video (1x BNC) 3G-SDI (BNC) / DDI version: 2 x 3G-SDI</p>
Power requirements (nominal)	<p>Power source for external power supply: 100 – 250 VAC / 47-63 Hz auto-switch Power source for display power input: +24 VDC / 2.5A</p>
Power consumption	<p>50W max (LED and DDI version) 75W max (MNA version)</p>
Power management	<p>DVI-DMPM states supported Power On state Active-Off state</p>
Dot clock	165 MHz max (DVI)
Gamma curve	Native, 1.8, 2.0, 2.2, 2.4, DICOM
OSD languages	English, French, German, Spanish, Italian
Dimensions w/o stand (W x H x D)	640 x 419 x 87 mm (25.2 x 16.5 x 3.4")
Dimensions power supply (W x H x D)	210 x 103 x 52 mm (8.27 x 4.06 x 2.05")
Net weight w/o stand	<p>9.4 kg (20.7 lbs) (LED and DDI version) 9.8 kg (21.6 lbs!) (MNA version)</p>

Product specifications**MDSC-2326**

Net weight power supply	1.5 kg (3.31 lbs)
Net weight packaged w/o stand	12.5 kg (27.6 lbs) (LED and DDI version) 12.9 kg (28.4 lbs) (MNA version)
Power supply DC output cable length	2.5 m (8.2 ft)
Mounting standard	VESA (100 x 100 mm)
Screen protection	Protective, non-reflective glass cover
Recommended modalities	Endoscopy, Laparoscopy, PACS, PM, US, CT, MR
Certifications	CE (Medical Device Class I) ANSI/AAMI ES 60601-1:2005; A1:2012 – Med. El. Equip., Part 1: general req. for basic safety and essential performance CAN/CSA-C22.2 No. 60601-1: 2014 Medical Electrical Equipment – Part 1: General Requirements for Basic Safety and Essential Performance (Adopted IEC 60601-1:2005, third edition, 2005-12) IEC 60601-1: 2005 + CORR. 1:2006 + CORR. 2:2007 + A1:2012 (Medical electrical equipment – Part 1: General requirements for basic safety and essential performance) EN 60601-1: 2006 + A1:2013 + A12:2014 (Medical electrical equipment*. Part 1: General requirements for safety) INMETRO
Supplied accessories	1x DVI-D video cable 1x printed User Guide (English) 1x documentation disc, containing all translations of the User Guide 1x external power supply 4 screws, 4 dented washers and an Allen key Mains cables
Optional accessories	Barco stand (K9302097A) Power extension cable 10m (K3495066) Power extension cable 30m (K3495068)
Warranty	3 years
Operating temperature	10 ~ 35°C for performance / 0 ~ 40°C for safety
Storage temperature	-20 ~ +60°C
Operating humidity	10 ~ 90% (non-condensing)
Storage humidity	10 ~ 90% (non-condensing)
Operating altitude	3000 m max
Storage altitude	12000 m max

Last updated: 15 Mar 2023

© 2018 Barco nv. All rights reserved. Reproduction in whole or in part without written permission is prohibited. All brand names and product names are trademarks, registered trademarks or tradenames of their respective holders. Due to continued innovation, information and technical specifications are subject to change without prior notice. Please check www.barco.com for the latest specifications.