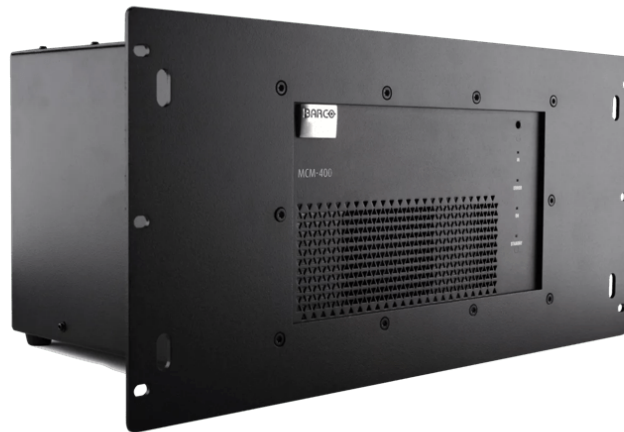
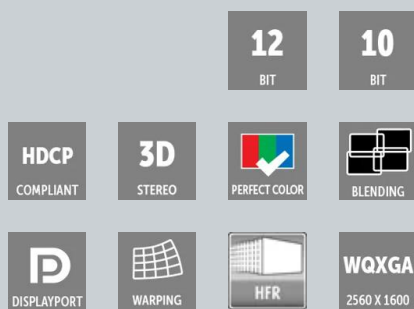


# MCM-50

External warping, blending and color matching box optimized for F50 WQXGA series



The MCM-50 serves as input processor on the F50 WQXGA series projectors allowing geometry correction, color correction, brightness monitoring and electronic blending up to 120 Hz . By using a real-time on-screen user interface, the MCM-50 helps achieve the performance known from Barco's higher end simulation projectors. In this way, this box enables several multi-channel configurations with multiple F50 projectors at native 120 Hz frame rates.

### Suited for mono and 3D-stereo sources

The MCM-50 handles both mono and stereo sources up to 120 Hz. Native WQXGA Active or passive stereo sources are converted into an active flicker-free stereo signal up to 120 Hz.

Four DisplayPort 1.1 inputs allow up to 2 sources to be connected in two columns of 1280 by 1600 pixels offering a full 2560\*1600 pixel canvas . Both mono (including encrypted HDCP content) and stereo sources are shown synchronously with the input, at a minimum delay.

### Easy to control

The MCM-50 can be controlled by means of an IR remote with an on-screen menu, or through IP. The latter allows easy integration with touch panels for convenient source switching and different geometry files.

Suitable for all environments:

- Larger collaboration rooms, both flat and curved
- 3D visualization as used in automotive, oil & gas
- scientific research and urban planning
- High speed training applications running at 120 Hz
- High resolution command and control displays

## Product specifications

## MCM-50

### General specifications

Inputs	4 times DisplayPort 1.1a that allows native WQXGA up to 120Hz in : -two columns 2 x 1280 x 1600 -four columns 4 x 640 x 1600 (mono content only) -four quadrants 4 x 1280 x 800 (mono content only) -Stereo sync input on 4 mini-din connectors or embedded on DP cables.
Input frequency	From 48-120 Hz
Outputs	2 times DisplayPort 1.1a to drive WQXGA F50 projector native in two columns 2 x 1280 x 1600
Output frequency	Synchronous mode : 48-120 Hz Asynchronous : 60 Hz mono or 120 Hz stereo
Network connection	Ethernet 10/100 RJ45
WARP	Hardware based real-time warping with easy on-screen menu
Color correction	Advanced color matching (Dynacolor) with linking capability
Features	Pixel accurate alfa and beta planes -Advanced electronic blending -outstanding anti aliasing
Mechanics	Rack mount kit included
Control	Through IR remote control or IP
Dimensions (HxWxD)	4 RU 295 mm x 290 mm x 215 mm (11.6" x 11.4" x 8.46")
Weight	6.11 kg (without packaging); 7.11 kg (with packaging)
Power	External power supply: 100-250V 50/60 Hz
Power consumption	77.3 W
Heat dissipation	264 BTU/h
Stereo support	Both passive and active stereo input capabilities
Compatibility	F50 WQXGA series
Electromagnetic Interference	Complies with FCC rules & regulations, part 15 Class A and CE EN55022 Class A
Ambient temperature	Max: +40°C   104°F Min: +10°C   50°F Storage: -35°C to +65°C   -31°F to 149°F
Humidity	Storage: 0 to 98% rel. humidity, non-condensing Operation: 0 to 95% rel. humidity, non-condensing

Last updated: 09 Jul 2024

© 2024 Barco nv. All rights reserved. Reproduction in whole or in part without written permission is prohibited. All brand names and product names are trademarks, registered trademarks or tradenames of their respective holders. Due to continued innovation, information and technical specifications are subject to change without prior notice. Please check [www.barco.com](http://www.barco.com) for the latest specifications.