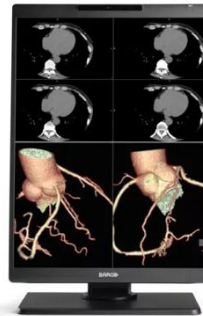


# Nio Color 2MP (MDNC-2521)

Your 21" 2MP companion for general radiology today



- A trusted display with a long and stable lifetime
- A complete solution, up to speed with radiology today
- Intervention-free QA with QAWEB Enterprise
- A++ ecolabel thanks to high energy efficiency

Our Nio Color 2MP display is part of a range of modern radiology monitors that gives you what you need. No fluff, no overload of functionalities. But a sleek thin bezel design and just those tools and technologies that help you process cases effortlessly and efficiently.

## A radiology monitor that fits your daily reading like a glove

Nio 2MP offers you exactly those tools that will make a difference. It boasts no less than 701 JNDs, so you can read detailed images with confidence. Its high luminance, I-Guard and Uniform Luminance technologies offer you a bright and stable screen quality. And the display also contains our SteadyColor and SteadyGray technologies for stable colors and grays. In any imaging modality.

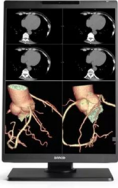
## Clean desk, clear head

All of the above is built into an elegant design with thin bezels that fits both your hospital, and your home office desks. Moreover, you can rotate your Nio 2MP monitor between portrait and landscape format. Combine it in multi-head arrangements, two or three or four heads, neatly arranged in an arc embracing you.

## A bright future

With Nio 2MP, you get a stable performance and a complete, industry-leading 5-year warranty that guarantees 20,000 backlight hours. Furthermore, our unique set of Intuitive Workflow Tools offers you a series of productivity hacks for more focus, flexibility and comfort. For example, did you know that SpotView has been proven to decrease reading time with no less than 15.5%? In short: you can rest easy with this young companion. For many years to come.

## Always a clear view with QAWEB Enterprise



QAWeb Enterprise helps you manage quality and assure compliance of your expanding healthcare enterprise with less effort, lower cost, and complete confidence. This fully automated and secure system supports consistent image quality, stable performance and uptime for all PACS display systems across your enterprise. You can install QAWeb Enterprise for free on all our diagnostic and clinical review displays.

### **Ensuring diagnostic confidence with MDR Class IIa**

Our radiology displays are MDR-certified as Class IIa. Their product information has been reviewed and cleared by independent medical and technical experts, and is audited yearly. In other words, we ensure diagnostic confidence and peace of mind for our users.

Please consult your Barco representative or distributor in your country or territory to confirm availability. A reference to any product or service on this site does not imply that such product is or will be available in your location.

**Product specificaties****NIO COLOR 2MP (MDNC-2521)**

| General specifications                               |   |
|--|---|
| Scherntechnologie                                    | IPS-SFT Color LCD   |
| Actief schermformaat (diagonaal)                     | 541 mm (21.3")  |
| Formaat actief scherm (H x V)                        | 433 x 325 mm (17.1 x 12.8")   |
| Beeldverhouding (H:V)                                | 4:3   |
| Resolutie  | 2MP (1600 x 1200 pixels)  |
| Pixelpitch   | 0.2707 mm   |
| Beeldkleur   | Yes   |
| Grijsbeeldvorming                                    | Yes   |
| Bit depth  | 30 bit  |
| Kijkhoek (H, V)                                      | 178°  |
| Uniformity correction                                | ULT   |
| SteadyGray   | Yes (in MXRT display controller), when used as a system with MXRT display controller & QAWeb Enterprise   |
| Steady Color   | Yes (in MXRT display controller), when used as a system with MXRT display controller & QAWeb Enterprise   |
| RapidFrame   | Yes   |
| I-Luminate   | No  |
| Voorgeprogrammeerde instellingen voor omgevingslicht | Yes, reading room selection   |
| Ambient light sensor                                 | Yes   |
| Backlight Output Stabilization Technology (BLOS)     | No  |
| Voorsensor   | Yes, I-Guard  |
| Presence sensor                                      | Yes   |
| Maximale luminantie (paneel standaard)               | 1000 cd/m <sup>2</sup>  |
| DICOM-gekalibreerde luminescentie                    | 600 cd/m <sup>2</sup>   |
| Contrastverhouding (paneel standaard)                | 2000:1  |
| Reactietijd ((stijgtijd + valtijd)/2) (standaard)    | 12 ms (gray-to-gray average)  |
| Kleur behuizing                                      | Black (RAL 9004) / White (RAL 9003)   |
| Video-ingangssignalen                                | 2x DisplayPort 1.4  |
| Video-uitgangssignalen                               | N/A   |
| USB-poorten  | 2x USB-B 2.0 upstream (endpoint)<br>5x USB-A 2.0 downstream (of which 1 charge port)  |
| KVM switch   | Yes   |
| Power rating   | 24 VDC, 4 A   |
| Voedingsvereisten                                    | This device shall only be powered by the medical approved power supply of Adapter Technology Co., Ltd., type ATM160T-P240. Ratings marked on the power supply: <ul style="list-style-type: none"> <li>■ Input: 100-240 VAC, 1.8-0.9 A, 50-60 Hz</li> <li>■ Output: 24 VDC, 6.6 A</li> </ul> |
| Energieverbruik                                      | 37 W (nominal)<br>< 0.35 W (hibernate)<br>< 0.30 W (switched off)   |
| Afmetingen met standaard (B x H x D)                 | Portrait: 351 x 531~631 x 225 mm<br>Landscape: 491 x 462~562 x 225 mm   |

**Product specificaties****NIO COLOR 2MP (MDNC-2521)**

|   |   |
|---|---|
| Afmetingen zonder standaard (B x H x D) | Portrait: 351 x 491 x 64 mm<br>Landscape: 491 x 351 x 64 mm   |
| Afmetingen verpakt (B x H x D)          | 455 x 210 x 770 mm  |
| Nettogewicht met standaard              | MDNC-2521 xPxx: 8.8 kg<br>MDNC-2521 xNxx: 7.7 kg  |
| Nettogewicht zonder standaard           | MDNC-2521 xPxx: 5.8 kg<br>MDNC-2521 xNxx: 4.7 kg  |
| Nettogewicht verpakt                    | MDNC-2521 xPxx: 12.2 kg (without optional accessories)<br>MDNC-2521 xNxx: 11.2 kg (without optional accessories)  |
| Kanteling                               | -10° to +30°  |
| Zwenking                                | -30° to +30°  |
| Roteren                                 | 90°   |
| Hoogteregelbereik                       | 100 mm  |
| Montagestandaard                        | VESA (100 mm)   |
| Bescherming van het scherm              | MDNC-2521 xPxx: Protective, anti-reflective front glass<br>MDNC-2521 xNxx: N/A  |
| Aanbevolen procedures                   | All digital images, except digital mammography  |
| Certificeringen                         | CE0123 (Medical Device) FDA 510(k) K230520 CCC (China), KC (Korea), BSMI (Taiwan), INMETRO (Brazil -Product numbers K9300390A, K9300391A), BIS (India), EAC (Russia, Kazakhstan, Belarus, Armenia and Kyrgyzstan) Safety specific: <ul style="list-style-type: none"><li>IEC 60950-1:2005 + A1:2009</li><li>EN 60950-1:2006 + A1:2010 + A11:2009 + A12:2011 + A2:2013</li><li>IEC 62368-1:2018</li><li>EN IEC 62368-1:2020</li><li>IEC 60601-1:2005 + A1:2012</li><li>EN 60601-1:2006 + A1:2013 + A12:2014</li><li>ANSI/AAMI ES 60601-1:2005 + R1:2012</li><li>CAN/CSA C22.2 No. 60601-1:2014</li></ul> EMI specific <ul style="list-style-type: none"><li>IEC 60601-1-2:2014 (ed4)</li><li>EN 60601-1-2:2015 (ed4)</li><li>FCC part 15 Class B</li><li>ICES-001 Level B</li><li>VCCI (Japan) (pending)</li></ul> Environmental: China Energy Label (pending), EU RoHS, China RoHS (pending), REACH, Canada Health, WEEE, Packaging Directive |
| Meegeleverde accessoires                | <ul style="list-style-type: none"><li>User Guide</li><li>Documentation disc</li><li>System sheet</li><li>Video cables</li><li>Mains cable(s)</li><li>USB cable</li><li>External power supply</li></ul>  |
| Optionele accessoires                   | Display controller  |
| Software voor kwaliteitsgarantie        | QAWeb   |
| Garantie                                | 5 years, including 20000 hours backlight warranty   |
| Bedrijfstemperatuur                     | 0 °C to 35 °C (20 °C to 30 °C within specs)   |
| Opslagtemperatuur                       | -20 °C to 60 °C   |
| Vochtigheid in bedrijf                  | 8 % to 80 % (non-condensing)  |
| Vochtigheid bij opslag                  | 5 % to 85 % (non-condensing)  |
| Bedrijfsdruk                            | 70 kPa minimum  |
| Opslagdruk                              | 50 to 106 kPa   |

**Laatst bijgewerkt: 07 May 2024**

© 2018 Barco nv. Alle rechten voorbehouden. Gehele of gedeeltelijke reproductie zonder schriftelijke toestemming is verboden. Alle merknamen en productnamen zijn handelsmerken, geregistreerde handelsmerken of handelsnamen van hun respectieve houders. Vanwege voortdurende innovatie kunnen informatie en technische specificaties zonder voorafgaande kennisgeving worden gewijzigd. Raadpleeg [www.barco.com](http://www.barco.com) voor de meest recente specificaties.