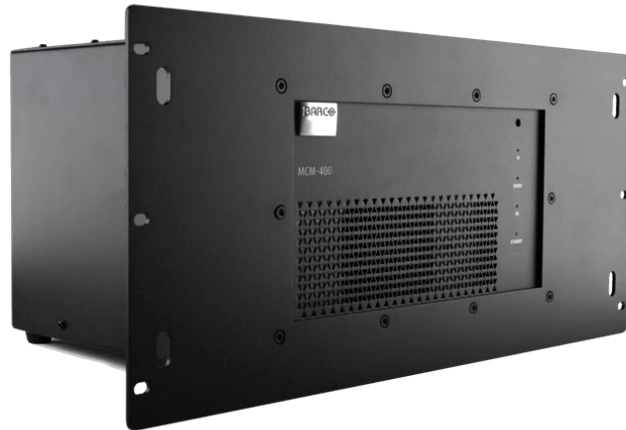


# MCM-400

External warping, blending and color matching box for 4K projectors



The MCM-400 is an external hardware component that allows geometry correction, color correction, and electronic blending on Barco's Galaxy 4K series projectors. By using a real-time on-screen user interface, the MCM-400 helps achieve the performance known from Barco's higher end simulation projectors. In this way, this box enables several multi-channel configurations with multiple 4K projectors.

### Suited for mono and 3D-stereo sources

The MCM-400 handles both mono and stereo sources up to 48 Hz. Stereo sources are connected in a passive way by means of a left and right passive stereo signal, which get converted into an active flicker-free stereo signal up to 120 Hz.

Four dual link DVI-D inputs allows 4K sources to be connected in 4 quadrants of 2048 by 1080 pixels, or two columns of 2048 by 2160 pixels, which simplifies pre-view capabilities. Both mono and stereo sources of 24 Hz or 48 Hz are shown synchronously with the input, at a minimum delay.

### Easy to control

The MCM-400 can be controlled by means of an IR remote with an on-screen menu, or through IP. The latter allows easy integration with touch panels for convenient source switching and different geometry files.

Suitable for all environments:

- Larger collaboration rooms, both flat and curved
- 3D visualization as used in automotive, oil & gas, scientific research and urban planning
- High resolution command and control displays

## Product specifications

## MCM-400

### General specifications

Inputs	4 times Dual link DVI-D Full 4K, using : <ul style="list-style-type: none"><li>4 x 2048x1080 or 1920x1080</li><li>2 x 2048x2160 or 1920x2160</li></ul>
Input frequency	Mono : 24-60 Hz (24 Hz optimal) Stereo : 24 -48 Hz
Outputs	2 times Dual DVI-D <ul style="list-style-type: none"><li>mono 4K: 2 x 2048x2160</li><li>stereo 2K: L/R 2048x1080</li></ul>
Output frequency	Mono : 24 Hz Stereo: 24-48 Hz
Network connection	Ethernet 10/100 RJ45
WARP	Hardware based real-time warping with easy on-screen menu
Color correction	Advanced color matching (Dynacolor) with linking capability
Features	Pixel accurate alpha and beta planes -Advanced electronic blending -4 quadrants input capabilities -outstanding anti aliasing
Mechanics	Rack mount kit included
Control	Through IR remote control or IP
Dimensions (HxWxD)	4 RU 295 mm x 290 mm x 215 mm (11.6" x 11.4" x 8.46")
Weight	6.11 kg (without packaging); 7.11 kg (with packaging)
Power	External power supply: 100-250V 50/60 Hz
Power consumption	77.3 W
Heat dissipation	264 BTU/h
Stereo support	Passive stereo support IN/OUT
Compatibility	Only with Barco Galaxy 4K series
Electromagnetic Interference	Complies with FCC rules & regulations, part 15 Class A and CE EN55022 Class A
Ambient temperature	Max: +40°C   104°F Min: +10°C   50°F Storage: -35°C to +65°C   -31°F to 149°F
Humidity	Storage: 0 to 98% rel. humidity, non-condensing Operation: 0 to 95% rel. humidity, non-condensing

Last updated: 09 Jul 2024

© 2024 Barco nv. All rights reserved. Reproduction in whole or in part without written permission is prohibited. All brand names and product names are trademarks, registered trademarks or tradenames of their respective holders. Due to continued innovation, information and technical specifications are subject to change without prior notice. Please check [www.barco.com](http://www.barco.com) for the latest specifications.