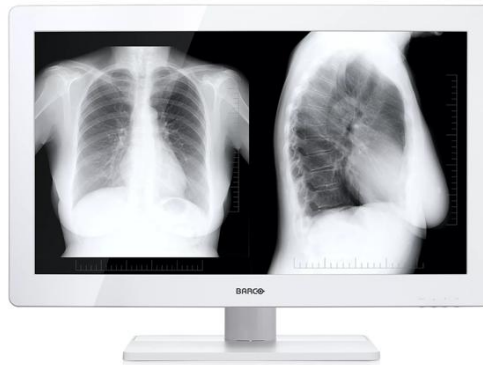
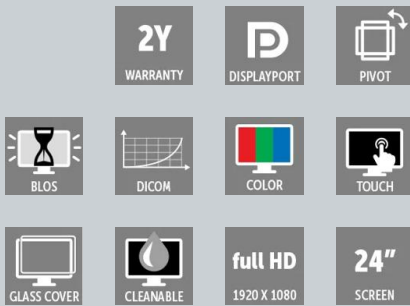


MAAC-2123

All-in-one touch display



- **Workstation and display in one**
- **Built for a wide variety of modality applications**
- **Optional touchscreen for excellent user experience**

Fit for image acquisition in multiple healthcare environments

The MAAC-2123 is a user interface designed for the review of multimodality images at acquisition systems – both mobile and fixed. It's an all-in-one 24" device that combines workstation (PC) and display in one single enclosure, for easy handling. Its thin and white design makes it easy to include in your healthcare environment.

Flexible and confident use

The display is DICOM-compliant and offers Backlight Output Stabilization and consistent image quality for confident use. The MAAC-2123 offers an extremely powerful CPU, which makes it fit for a wide variety of modality applications. Thanks to its long lifecycle, you'll be able to use this device with peace of mind for many years to come!

Optional touchscreen

With the MAAC-2123 5TW, you'll get the user interface with p-cap multi-touch screen and anti-glare coated glass, completing an excellent user experience. The MAAC-2123 5NW is a non-touch version without glass cover.

The MAAC-2123 comes with a standard warranty of 2 years, which can be extended through our ExtendedCare offering. Don't hesitate to contact us in case you have any question!

Product specifications

MAAC-2123

Display

Screen technology	AHVA (IPS alike)
Backlight	WLED
Active screen size (diagonal)	23.8" (604,7mm)
Active screen size (H x V)	527,04mm(H) x 296,46mm(V)
Aspect ratio (H:V)	16:09
Resolution	1920x1080 60Hz
Color imaging	Yes
Pixel size	0,275mm x 0,275mm
Response time	14ms
Color depth	16,7M colors (true 8 bits)
Viewing angle (H, V)	178/178 degree (Typical)
Brightness	400 nits (cd/m2) (Typical); 320nits (Min.)
Contrast ratio	1000:1 (Typical)

System specifications

Touch screen	For Option: 5TW <ul style="list-style-type: none">Projected-Capacitive 10 points Multi Touch, USB interface.Surface Hardness: > 6H (P-CAP)
--------------	--

DICOM calibrated luminance	<ul style="list-style-type: none">Light Sensor on the Rear Side of PanelBrightness for Calibration and Light sensor enable spec: 200 cd/m2
----------------------------	---

CPU	<ul style="list-style-type: none">6th Generation Intel® Core™ processorLGA 1151 socket type.Factory default: Intel® Core™ i5-6500TE Processor, 6M Cache, up to 3.30 GHz
-----	---

Cooling	Smart FAN design
Graphics	Integrated Intel® HD Graphics
Ambient Light Compensation (ALC)	Preset values in OSD
Power	19V DC Input, 6.32A current rating, medical-grade 100V~240V 50/60Hz AC input power supply
Power consumption	45W (typ. WIN10 OS loaded only without peripherals connection) / 3W (stand-by)
Storage capacity	Two Removable 2.5" Storage bay with easy access mechanical lock design Factory default: 1 x 500G SATA HDD
System memory	2 x DDR4-1866/ 2133 SODIMM socket, support up to 16GB capacity. Factory default: 1x DDR4 8GB Memory
Operating system	Windows® 10 LTSB 2016 64 bit

Connectivity

I/O ports	<ul style="list-style-type: none">5 x LAN Ports: All support PXE and WOL (Factory default PXE Disable)1 x Display Port (V1.2)1 x Reset push button1 x RS232 DB9 Male connector
-----------	---

USB ports	<ul style="list-style-type: none">4 x USB 2.0 type A female, stackable 2x2 connector2 x USB 3.0 type A female, stackable 1x2 connector1 x Mini USB for Scalar Board Firmware Update2 x USB 2.0 type A female on side panel
-----------	---

Audio	<ul style="list-style-type: none">H110 embedded HDA, with ALC886 codecNo Internal Mic1 x Earphone Jack Support Mic-in / Stereo Audio-out on Bottom I/OIntegrated stereo speakers, 2 x 2Watt
-------	--

Accessories

Mounting	VESA 100 mm standard; Fixed with 4 screws on stand Stand screws: M4X14mm
Functionality	Height adjustable (100 mm +/-50 mm), tilt (-8° / +30°) and swivel (-45° / +45°), Pivot (portrait/ landscape: 90°)

Compliance

Certifications	<ul style="list-style-type: none">China RoHSROHS-2REACHWEEE
----------------	--

Safety	<ul style="list-style-type: none">CE safety (IEC 60601-1:2012 3.1 edition) and EMC (IEC 60601-1-2: 2014, EN 60601-1-2:2015)UL/cUL (ANSI/AAMI ES60601-1, CAN/SA-C22.2 No. 60601-1)FCC (CFR47 part 15 Class B)CCC (GB4943.1, GB9254, GB17625.1)
--------	--

Physical characteristics

Mechanical	Material: Plastic
Dust-water protection	IP 33 front (touch model only)

Environmental conditions

Operating temperature	0 ~ 35°C (Still Air)
Storage -transport temperature	-20 °C to 60 °C
Storage humidity	20% -85% (non-condensing)

Storage -transport humidity	5% to 85% (non-condensing)
Operating pressure	70 to 106 kPa
Storage -transport pressure	50 to 106 kPa

Last updated: 09 Jul 2024

© 2024 Barco nv. Wszelkie prawa zastrzeżone. Powielanie w całości lub w części bez pisemnej zgody jest zabronione. Wszystkie nazwy marek i produktów są znakami towarowymi, zastrzeżonymi znakami towarowymi lub nazwami handlowymi odpowiednich właścicieli. Ze względu na ciągłe innowacje, informacje i specyfikacje techniczne mogą ulec zmianie bez wcześniejszego powiadomienia. Sprawdź www.barco.com, aby uzyskać najnowsze specyfikacje.