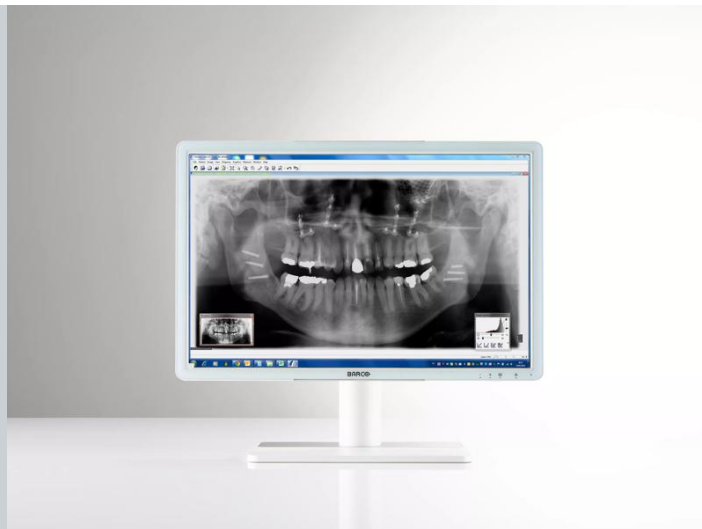
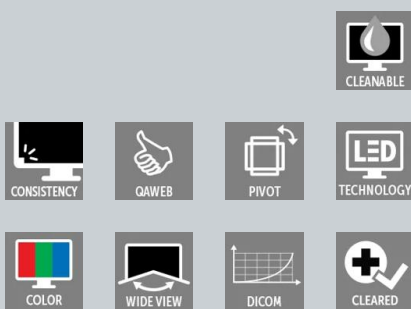


Eonis 24" (MDRC-2224 WP) Dental

White 24" dental display with cleanable design



- 24" display for reviewing dental images
- With front sensor for consistent images
- With remote QA management tools
- Fully sealed, fully cleanable

Barco's Eonis® dental display perfectly answers a series of needs that many dentists will recognize: an attractive, versatile design, excellent cleanability and bright, consistent image quality. The white version features a front glass panel and is fully sealed, making it exceptionally cleanable, even with 70% alcohol cleaning agents.

Fully cleanable design

Barco's Eonis display features toughened glass and covered cables, making the display safe to use in a dental environment. The display has a protective front glass panel and is rated IP-32 front and back, making it exceptionally cleanable to prevent contamination.

Attractive, versatile and multi-purpose

Stylishly white with rounded corners and an integrated cable management system, the display will perfectly blend into every dental practice. The multiple mounting options further add to its smart design: it can be used with a VESA stand, on the dentist's desk, or mounted on a rotatable arm. Multiple connections are available, including extra inputs to show video content.

Consistent image quality

Eonis displays provide crisp, high-contrast images for fast and effective viewing of dental images. To guarantee image consistency at all times, the display features a unique front sensor that automatically aligns image quality every time the display is turned on. Barco's online MediCal QAWeb service further strengthens image consistency and allows you to easily personalize your image.

- Front consistency sensor automatically aligns image quality

- IPS panel ensures wide viewing angle
- MediCal QAWeb suite for networked quality assurance, calibration and asset management all add to the exceptional, consistent image quality
- Exceptional cleanability with 70% alcohol based cleaning fluids (white version)
- Toughened, scratch-proof front glass
- Covered cables
- Medical-grade certifications
- Socket for Kensington lock makes it safe for use in clinical environments
- Flexible VESA mount for easy arm, wall or cart mounting
- Screen positioning in both landscape and portrait orientation
- Top connections for easy and secure connections
- Multiple inputs (HDMI, USB, etc.) ensure the display's flexible deployment.

Product specificaties**EONIS 24" (MDRC-2224 WP) DENTAL****General specifications**

Schermt technologie	TFT Color LCD IPS
Actief schermformaat (diagonaal)	611.3 mm (24.1") 518.4 mm x 324.0 mm (20.41" x 12.76") (HxV)
Achtergrondverlichting	LED
Beeldverhouding	16:10
Resolutie	2MP (1920 x 1200)
Pixelpitch	0.270 mm x 0.270 mm
Beeldkleur	Yes
Grijsbeeldvorming	Yes
Kleurondersteuning	10 bit
Kijkhoek	178° (IPS)
Omgevingslichtcompensatie (OLC)	Yes, preset values in OSD
Voorsensor	Yes
Maximale luminantie	300 cd/m ² typical
DICOM-gekalibreerde luminescentie	180 cd/m ²
Contrastverhouding	1000:1 typical
Reactietijd (stijgtijd + valtijd)	14 ms typical
Kleur behuizing	White + Silver
Video-ingangssignalen	VGA, DisplayPort, HDMI
USB-poorten	1 upstream, 2 downstream
USB-standaard	2.0
Voedingsvereisten (nominaal)	100-240 V
Stroomverbruik (nominaal)	40 W (less than 1.0 W in stand-by)
Energiebesparingsmodus	Yes
Energiebeheer	DPMS
Puntklok	165 MHz
OSD-talen	English, French, German, Spanish, Italian, Dutch, Japanese, Traditional Chinese, Simplified Chinese, Korean
Afmetingen met standaard (B x H x D)	560.4 x 533 x 166.35 mm
Afmetingen zonder standaard (B x H x D)	560.4 x 366 x 61.72 mm
Afmetingen verpakt (B x H x D)	481 x 273 x 761 mm
Nettogewicht met standaard	9.5 kg
Nettogewicht zonder standaard	6.17 kg
Nettogewicht verpakt met standaard	13.5 kg
Hoogteregelbereik	100 mm +/-5.0 mm
Kanteling	-5° / +20°
Zwenking	-45° / +45°
Roteren	90°
Montagestandaard	VESA (100 mm)
Bescherming van het scherm	Protective, non-reflective glass cover
Certificeringen	CE (MDD 93/42/EEC class I product), CE -2004/108/EC, IEC 60601-1 (ED.3), ANSI/AAMI ES 60601-1:2005 + C1:2009,CAN/CSAC22.2 No. 60601-1-1-08:2008, DEMKO -EN 60601-1-1:2006, EN 60601-1-2:2007, CCC -GB9254-2008 + GB4943-2001 + GB17625.1-2003, KC, BIS, VCCI, FCC class B, ICES-001 Level B, FDA Class I device, RoHS
Meegeleverde accessoires	User Guide Cable routing strap Video cables (1 x VGA + 1 x HDMI + 1 x DP) Main cables (UK, European (CEBEC/KEMA) or USA (UL/ CSA; adaptor plug NEMA 5-15P) or Chinese (CCC)) USB 2.0 cable This adapter(s) is a forming part of the medical device.(Manufacturer: BridgePower Corp.; model:BPM060S12F03; Input:100-240 V AC, 50-60 Hz, 1.5 A; Output: +12V DC (), 5.0 A)
Software voor kwaliteitsgarantie	QAWeb & QAWeb Private Practice
Garantie	3 years
Bedrijfstemperatuur	+10°C / +35°C
Opslag -transporttemperatuur	-20°C / +60°C
Vochtigheid in bedrijf	10% -90% (non condensing)
Opslag -transportvochtigheid	5% -90% (non-condensing) at 39 deg ambient
Bedrijfshoogte	3000m
Opslag -transporthoogte	5500m
Bedrijfsdruk	70 kPa -106 kPa
Opslag -transportdruk	50 kPa -106 kPa

Laatst bijgewerkt: 08 Jul 2024

© 2024 Barco nv. Alle rechten voorbehouden. Gehele of gedeeltelijke reproductie zonder schriftelijke toestemming is verboden. Alle merknamen en productnamen zijn handelsmerken, geregistreerde handelsmerken of handelsnamen van hun respectieve houders. Als gevolg van voortdurende innovatie kunnen informatie en technische specificaties zonder voorafgaande kennisgeving worden gewijzigd. Controleer www.barco.com voor de nieuwste specificaties.