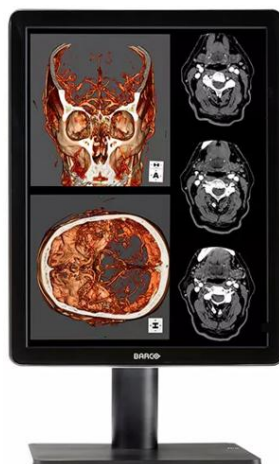


# Nio Color 2MP LED (MDNC-2221)

2MP high-bright color display system



- Color medical display with 1600 x 1200 resolution
- Barco LED technology to unveil the subtlest details
- Front sensor for on-demand image quality checks

Nio Color 2MP LED is a 2 MegaPixel color display system with LED backlights, providing excellent image quality for confident diagnoses. Nio Color 2MP LED provides an effective display solution for a multitude of applications and modalities, including 3D PACS, 3D echo, ultrasound, orthopedic imaging, CAD, image fusion, nuclear medicine and PET.

#### Confident color reading

Equipped with high-bright LED backlights, Nio Color 2MP LED delivers excellent brightness and more shades of gray to detect subtle details more quickly. The unique front-of-screen sensor ensures you see consistent and precise images at all times for confident diagnoses.

#### On-demand image quality checks

The front-of-screen sensor on Nio Color 2MP LED, which works seamlessly with Barco's online QAWeb Enterprise solution for automated Quality Assurance and on-demand calibration, makes sure you are viewing perfect DICOM images.

#### An excellent investment

The Nio Color 2MP LED is as low in power consumption as it is high in brightness. Because it uses less power, the display produces less heat and requires less cooling, which impacts maintenance and operational costs. Additionally, the LED backlights offer a long lifetime - even at high brightness - providing an excellent return on your investment.

Nio Color 2MP LED is available with and without cover.

- High-bright and power-efficient LED backlights
- Accurate grayscale and color rendering
- Front sensor and QAWeb Enterprise for easy DICOM conformance
- High-performance 3D rendering with full 3D, OpenGL and DirectX support

**Product specificaties****NIO COLOR 2MP LED (MDNC-2221)**

| General specifications                               |  |
|--|--|
| Scherntechnologie                                    | IPS-Pro  |
| Actief schermformaat (diagonaal)                     | 540 mm (21.3")   |
| Formaat actief scherm (H x V)                        | 432 x 324 mm (17.0 x 12.8")  |
| Beeldverhouding (H:V)                                | 4:3  |
| Resolutie  | 2MP (1600 x 1200 pixels)   |
| Pixelpitch   | 0.27 mm  |
| Beeldkleur   | Yes  |
| Grijsbeeldvorming                                    | Yes  |
| Bit depth  | 30 bit   |
| Kijkhoek (H, V)                                      | 178°   |
| Uniformity correction                                | ULT  |
| Voorgeprogrammeerde instellingen voor omgevingslicht | Yes, reading room selection  |
| Ambient light sensor                                 | Yes  |
| Backlight Output Stabilization Technology (BLOS)     | Yes  |
| Voorsensor   | Yes  |
| Maximale luminantie (paneel standaard)               | 800 cd/m <sup>2</sup>  |
| DICOM-gekalibreerde luminescentie                    | 500 cd/m <sup>2</sup>  |
| Contrastverhouding (paneel standaard)                | 1400:1   |
| Reactietijd ((stijgtijd + valtijd)/2) (standaard)    | 10 ms  |
| Kleur behuizing                                      | RAL 9003 / RAL 9004  |
| Video-ingangssignalen                                | 1x DVI<br>1x DisplayPort   |
| USB-poorten  | 1x USB 2.0 upstream (endpoint)<br>2x USB 2.0 downstream  |
| Power rating   | 24 VDC, 3.75 A   |
| Voedingsvereisten                                    | This device shall only be powered by the following medical approved power supply:<br>Bridgepower, type JMW190KB2400F11<br>Ratings marked on the medical power supply:<br>■ Input rating: 100–240 VAC, 2 A, 50–60 Hz<br>■ Output rating: 24 VDC, 3.75 A |
| Energieverbruik                                      | 50 W (nominal)<br>< 1 W (hibernate)<br>< 1 W (standby)   |
| Afmetingen met standaard (B x H x D)                 | Portrait: 378 x 525~625 x 235 mm<br>Landscape: 491 x 466~566 x 235 mm  |
| Afmetingen zonder standaard (B x H x D)              | Portrait: 378 x 491 x 83 mm<br>Landscape: 491 x 378 x 83 mm  |
| Afmetingen verpakt (B x H x D)                       | 655 x 388 x 495 mm   |
| Nettogewicht met standaard                           | With protective cover: 12.6 kg<br>Without protective cover: 11.3 kg  |
| Nettogewicht zonder standaard                        | With protective cover: 7.6 kg<br>Without protective cover: 6.3 kg  |
| Nettogewicht verpakt                                 | With protective cover: 16.8 kg (without optional accessories)<br>Without protective cover: 15.5 kg (without optional accessories)  |

**Product specificaties****NIO COLOR 2MP LED (MDNC-2221)**

|                                  |  |
|----------------------------------|--|
| Kanteling                        | -5° to +25°  |
| Zwenking                         | -30° to +30°   |
| Roteren                          | 90°  |
| Hoogteregelsbereik               | 100 mm   |
| Montagestandaard                 | VESA (100 mm)  |
| Aanbevolen procedures            | All digital images, except digital mammography   |
| Certificeringen                  | IEC 60601-1(ed.3); IEC 60601-1(ed.3 am1)<br>ANSI/AAMI ES60601-1(2005+C1:09+A2:10+A1:12)<br>CAN/CSA-C22.2 No. 60601-1(2014)<br>EN 60601-1-2:2015<br>EN 60601-1:2006/A11:2011/A12:2014; EN 60601-1:2006/A1:2013<br>CCC -GB9254-2008 + GB4943.1-2011 + GB17625.1-2012<br>KC<br>BIS<br>BSMI<br>EAC<br>INMETRO<br>VCCI<br>FCC class B<br>ICES-001 Level B<br>FDA 510(k)<br>RoHS |
| Meegeleverde accessoires         | User guide<br>Documentation disc<br>System sheet<br>Video cable<br>Mains cable(s)<br>USB cable<br>External power supply  |
| Software voor kwaliteitsgarantie | QAWeb  |
| Garantie                         | 5 years, including 20000 hrs backlight warranty  |
| Bedrijfstemperatuur              | 0 °C to 35 °C (15 °C to 30 °C within specs)  |
| Opslagtemperatuur                | -20 °C to 60 °C  |
| Vochtigheid in bedrijf           | 8% to 80% (non-condensing)   |
| Vochtigheid bij opslag           | 5% to 85% (non-condensing)   |
| Bedrijfsdruk                     | 70 kPa minimum   |
| Opslagdruk                       | 50 to 106 kPa  |

Laatst bijgewerkt: 07 May 2024

© 2018 Barco nv. Alle rechten voorbehouden. Gehele of gedeeltelijke reproductie zonder schriftelijke toestemming is verboden. Alle merknamen en productnamen zijn handelsmerken, geregistreerde handelsmerken of handelsnamen van hun respectieve houders. Vanwege voortdurende innovatie kunnen informatie en technische specificaties zonder voorafgaande kennisgeving worden gewijzigd. Raadpleeg [www.barco.com](http://www.barco.com) voor de meest recente specificaties.