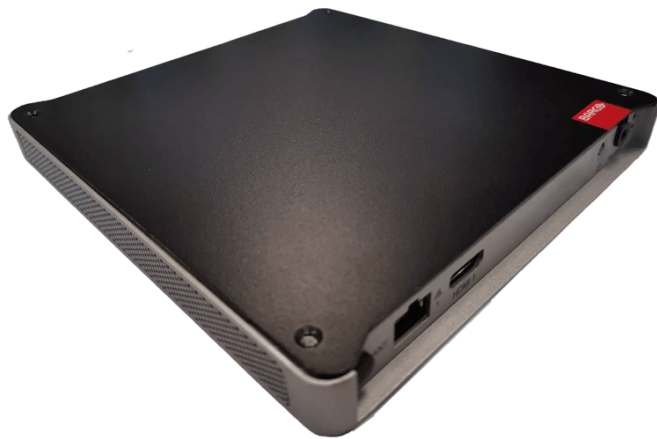


WME-050

Next-generation large video wall management, made easier



- **On premise installation**
- **Secure and easy integration in existing IT networks**
- **Reliable enterprise platform, designed for 24/7 operation**

The WME-050 helps you to easily set up, configure and maintain your video wall. This allows integrators and managed service providers to monitor all parameters of the video walls in a single dashboard. You can easily maintain, manage and monitor devices, often distributed over a number of different buildings and locations.

Product specifications**WME-050**

General specifications	
Operating system	Linux
Hardware configurations	Intel(R) Celeron 6305E CPU (Tiger Lake) 8 GB RAM 60 GB Industrial SSD
Connectivity	2x LAN 2x USB 3.0 (Type A) 2x USB 2.0 (Type A)
Power	DC: 19V, 3.42A
Power consumption	65W (max)
Heat dissipation	221 BTU/h
Noise level (@ 20°C -68°F)	Fanless design
Operating conditions	0°C -40°C, up to 80% humidity, non-condensing
Package content	<ul style="list-style-type: none">■ 1x WME-050 controller■ 2x Chassis mounting brackets■ 4x Chassis feet■ 4x Screws (M3x8)■ 1x Infrared (IR) receiver■ 1x Remote control■ 1x External power supply■ 1x Country-specific power cable (optional)■ 1x Quick Start Guide■ 1x Safety Manual
Accessories	19" rack mount (R985099) (optional)
Dimensions	
Dimensions (HxWxD)	19 x 180 x 190 mm
Dimensions (packaged)	90 x 310 x 230 mm
Weight	Appliance: 0.87 kg Power supply: 0.21 kg
Packaged weight	1.7 kg

Last updated: 12 Apr 2024

© 2018 Barco nv. All rights reserved. Reproduction in whole or in part without written permission is prohibited. All brand names and product names are trademarks, registered trademarks or tradenames of their respective holders. Due to continued innovation, information and technical specifications are subject to change without prior notice. Please check www.barco.com for the latest specifications.